



OVERLAND PARK COMMUNITY GARDEN

2019 Annual Report





MISSION

To provide an enjoyable, accessible space for residents to grow healthy food, using organic, sustainable, and environmentally friendly methods.

Statistics

- The garden was fully leased by the first of March 2019 with 47 participants.
- Sixteen new gardeners joined via the garden's wait list. Eight gardeners have been with the garden since its inception in 2011!
- Gardeners represented the Johnson County area: Overland Park (28); Leawood (3); Lenexa (2); Merriam (1); Mission (1); Prairie Village (1).
- 192 plus pounds of produce was donated to various food pantries and shared with neighbors and friends of the gardeners. Grace Garden plot, a project of the environmental ministry of Grace Covenant Presbyterian Church, grew the majority.





President's Note

I am writing my note for 2019, in the midst of the 2020 pandemic, and it is difficult at best... I'll try and not wax poetic for those good old days....



2019 was another good year for the garden. We enjoyed hosting the 1st Grade Daisy troop for their service project. It was great to see the enthusiasm the girls put into the project of emptying the compost bins and to turn it into fun. They explored the worms, pill bugs, and other creatures found in the finished compost.



In November, the Giving Grove Phase II planting of 11 more trees took place with a great bunch of volunteers from Blue Beetle. A huge shout out goes to the City of Overland Park-Parks and Recreation Department for providing the financing for the trees.



A perpetual spring of gratitude goes out to our land partner, the Johnson County Library. The operational support from the City of Overland Park-Parks and Recreation Services is invaluable for the success of the garden.



Thank you!
Bev Jaderborg



Garden Happenings

April 27, 2019:

Seed Library Exchange

Gardeners selected seeds to use in their plot from a wide variety of seed packets. The seed packets were generously donated by Baker Creek Heirloom Seeds. It was a fun way to try something new & different in their plots.



May 14, 2019:

1st Grade Daisy Troop learned how compost is made through a hands-on demonstration. They turned & emptied the finished compost on the raspberries. They were so amazed at all the creepy crawly things in the compost.





Garden Happenings



Sept. 2019 Flower Power: A Gardener's Encounter

A mom & her young daughter (3) stopped by. The mom commented "...we have to come and see it almost everyday. **She loves the zinnias.**" The gardener picked some zinnias & gave them to the little girl to take home. The mom inferred that the garden's flowers are the talk of their neighborhood.



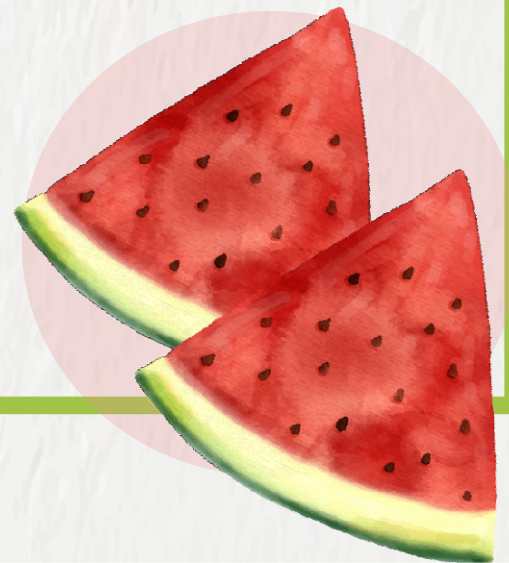
November 16, 2019:

Phase II of the Giving Grove was planted with the great volunteers from Blue Beetle & gardeners. 11 fruit trees were planted to join the existing 11 fruit trees planted in 2016. The orchard is comprised of variety of apples & pear trees.



Balance Sheet

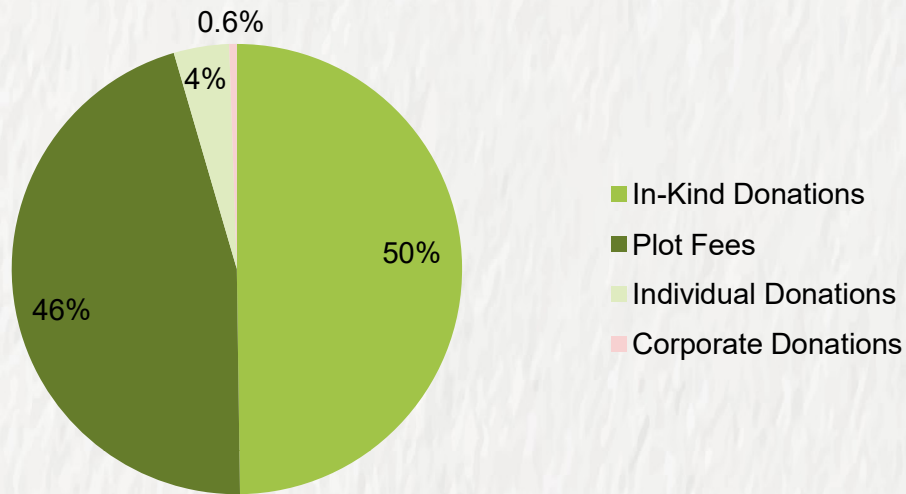
	As of 12/31/2019	As of 12/31/2018
ASSETS		
Cash	6,328	5,886
Gift Card	119	119
Fixed Asset - Shed	2,326	2,326
Accumulated Depreciation	(1,420)	(1,032)
TOTAL ASSETS	7,353	7,299
LIABILITIES & NET ASSETS		
Unrestricted Net Assets	5,428	5,374
Board Restricted Net Assets	1,925	1,925
TOTAL LIABILITIES & NET ASSETS	7,353	7,299



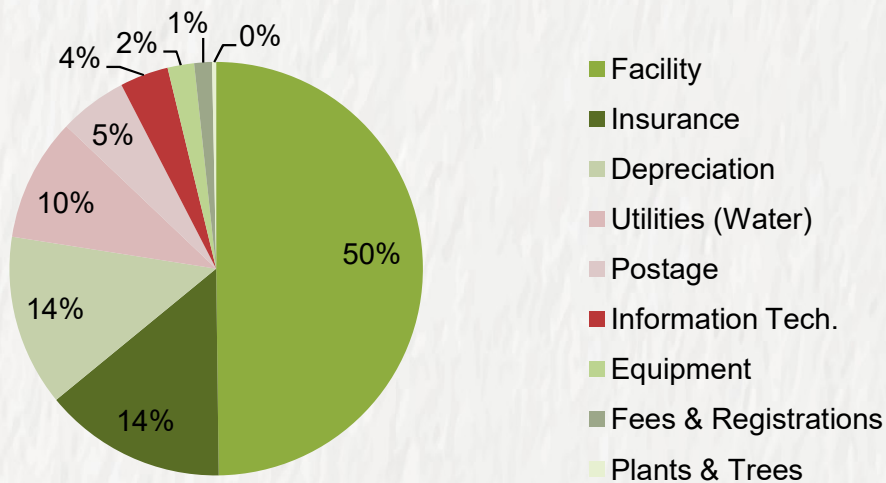


Revenue & Expenses

2019 Operating Revenues



2019 Operating Expenses



For year ending	12/31/2019
Operating Revenue =	2,945
Operating Expenses =	2,892
Net =	53



Donors

Land Partner
\$ Priceless!

Johnson County Library


Community
\$ 1,000

City of Overland Park, Park Services Department


Planting
\$ 100+

D. and L. Jordan
Baker Creek Heirloom Seeds

friends
Under \$100

B. Bailey
T. and P. Gelpi
S. Jarrett
AmazonSmile Foundation
PayPal Giving Fund

If you have a garden and a library, you have everything you need.

— Cicero





Board of Directors

Bev Jaderborg	President
Ginny Williams	Treasurer
Bill Mace	Garden Manager
Barry Bailey	Giving Grove Steward
Kadie Crivello	Member
Semra Fetahovic	Member
Jill Forrest	Member
Kristin Taylor	Member





Contact Us

Garden Mailing Address:
Overland Park Community Garden, Inc.
PO Box 13342
Overland Park, KS 66282-3342

Garden Location:
9500 Bluejacket, Overland Park, KS @ Oak Park Library

OPCG Email: opgarden@gmail.com

OPCG Website: <http://opgarden.org>

OPCG Facebook:
<https://www.facebook.com/Overland-Park-Community-Garden>

OPCG on Instagram: [#overlandparkcommunitygarden](https://www.instagram.com/overlandparkcommunitygarden)



Giving Grove Orchard Expansion Planting Crew
Nov. 2019



*Member Submitted Photos



OVERLAND PARK COMMUNITY GARDEN

2019 Annual Report

Thank You for all the support!

